



**DEHA**marine

**SHIPBUILDING INSULATION  
& FURNISHING SOLUTIONS**

**DEHA**marine

[www.dehamarine.com](http://www.dehamarine.com)

[info@dehamarine.com](mailto:info@dehamarine.com)  
[sales@dehamarine.com](mailto:sales@dehamarine.com)

Esenyalı mah. Yanyol cad. VARYAP Plaza No:61 Kapı No:102 | Pendik / İstanbul

# Certified to Perform Build to Last



0437 / 25



[www.dehamarine.com](http://www.dehamarine.com)

# About Us

**Deha Marine** is a specialized supplier offering insulation, outfitting, and technical procurement solutions for the shipbuilding, maritime, and broader industrial sectors. Representing quality, trust, and sustainability in the field, we provide MED/IMO-certified materials, high-performance construction chemicals, ceramic fiber insulation products, and marine furnishing solutions. Understanding the unique demands of both maritime and industrial applications, Deha Marine delivers not only products but also efficiency, safety, and comfort. Headquartered in Istanbul and backed by a flexible logistics infrastructure, we are a reliable partner for both local and international projects.

## **Marine Insulation**

Deha Marine specializes in the supply of MED/IMO-certified marine insulation materials designed for fire resistance, thermal and acoustic performance. Our product portfolio includes ceramic fiber insulation and construction chemicals tailored for shipbuilding applications. We support both new build and maintenance projects with reliable, high-quality solutions that meet international standards.

## **Marine Furnishing**

We offer MED/IMO-certified production of marine mattresses, seats, and curtains. In addition, Deha Marine provides marine flooring applications and certified covering materials suitable for passenger and crew areas. Our outfitting solutions are designed to enhance safety, durability, and comfort in both newbuild and retrofit projects.



# Our Vision

To become a globally recognized supply brand in the maritime and shipbuilding sectors with an innovative and sustainable product portfolio that meets international standards.

- ❖ To introduce IMO/MED-certified, safe, and eco-friendly products to the industry,
- ❖ To ensure comfort, efficiency, and safety in maritime projects,
- ❖ To be a solution-oriented partner with a customer-focused and technically competent approach,
- ❖ To add value to the sector through a continuously evolving product range and engineering-based mindset.



# Our Mission

- ❖ **Quality:** We prioritize compliance with international standards and certified production across all our products.
- ❖ **Reliability:** We ensure transparency and consistency throughout our supply chain and fulfill our commitments on time.
- ❖ **Sustainability:** We offer long-lasting, environmentally conscious solutions with low VOC levels.
- ❖ **Innovation:** We respond to evolving customer needs by developing new products that shape the industry.
- ❖ **Collaboration:** We build strong partnerships with shipyards, engineering firms, and end users, actively participating as a solution partner in projects.



# Our Values



# INSULATION SOLUTIONS

- ❖ D-FLEX 7040 SLX Marine Self Leveling
- ❖ D-FLEX 7050 FLX Marine Floor Filling
- ❖ D-FLEX SC 520 Flooring Adhesive
- ❖ D-FLEX PRIMECOAT Primer
- ❖ D-FLEX MARINS TP 115
- ❖ D-WOOL CFB1260 Ceramic Fiber Blanket
- ❖ D-WOOL CFBB1000 Ceramic Fiber Blanket Biosoluble

## SHIPBUILDING INSULATION



0437 / 25

# D-FLEX

## 7040 DLX

Marine Self Leveling



### D-FLEX 7040 SLX Marine Self Leveling

Deha Marine's MED/IMO-certified marine base mortar solution. Designed for shipbuilding and offshore projects, this rapid drying self-leveling screed can be applied up to 30 mm on steel, galvanized, and concrete decks. It spreads within 25–30 minutes, becomes walkable in 3–4 hours, and fully cures in 48 hours. With flexural strength of F7 (7 N/mm<sup>2</sup>) and high compressive performance, it provides long-lasting durability in heavy traffic areas. Resistant from –50 °C to +700 °C, it meets international maritime safety requirements with its A-60 fire class (MED/IMO certified) rating.

### Areas of Use

Ships, commercial and industrial areas, hospitals, busy walking areas.

A high strength, fast drying universal leveling mortar used in areas where the surface is covered with epoxy during the application of flooring elements such as PVC, linoleum, carpet, laminate and glued parquet, rubber and for the purpose of eliminating and levelling irregularities in concrete, screed, asphalt and anhydrite floors.

# DEHAMARINE

DEHA MARINE İÇ ve DIŞ TİC. LTD. ŞTİ.

Esenyalı Mah. Yanyol Cad. Varyap Plaza No:61 No:102 | Pendik / İstanbul

Mail: [info@dehamarine.com](mailto:info@dehamarine.com)

## SHIPBUILDING INSULATION



0497 / 25

# D-FLEX

## 7040 DLX

Marine Self Leveling

### Application Limits

- ❖ **Mixing Ratio:** 25 kg powder / 6,0-6,5 L water
- ❖ **Application Temperature:** +5 °C to +30 °C (substrate and ambient)
- ❖ **Mortar Self Leveling Time:** 25-30 min\*
- ❖ **Temporary pedestrian traffic opening time:** 3-4 hours\*
- ❖ **Drying time:** 48 hours for final drying\*
- ❖ **Application thickness:** Max. 30 mm

\*Values found at 23±2 0C temperature and 50±5 % relative humidity

### Surface Preparation

Surfaces must be **solid, dry, clean and capable of withstanding loads**. Surfaces where **D-FLEX 7040 SLX** will be applied must be pre-cleaned with absorbent Marflex Primer for surfaces (0.3-0.8 mm sand on top) (by sprinkling) with D-FLEX Primer for non-absorbent surfaces should be made ready.

### Application

- ❖ **25 kg D-FLEX 7040 SLX** leveling compound with 6,0-6,5 L of clean water with a low speed mixer until a homogeneous mixture is formed is mixed.
- ❖ The prepared fluid mortar should be poured onto the surface.
- ❖ The thickness of the self-leveling mortar should be adjusted with a steel trowel and the application should be completed by passing over it with a spiked roller.
- ❖ Application of polish on decorative screed 48 hours after application can be done.
- ❖ After 12 hours, the floor should be opened for final use.

### Technical Specification

- ❖ **Color and Appearance** : Grey fine powder
- ❖ **Flexural Strength** : F7 "7 N/mm2 " (TS EN 13813)
- ❖ **Heat Resistance** : After final drying -50 C / +700 C
- ❖ **Fire class** : A - 60

### Consumption

1,6 kg/m2 (for 1 mm thickness)

### Points to be Noted

- ❖ Any additive not specified in the application instructions is not added.
- ❖ After mixing, the product should be used within its pot life.
- ❖ It is not applied on constantly wet and damp surfaces.
- ❖ During application, the ground should be protected from wind, direct sun impact and frost.
- ❖ It is not applied on weak and loose surfaces, very smooth and
- ❖ Roughening should be done on shiny surfaces.
- ❖ Not applicable in outdoor areas.
- ❖ The drying time of the product may vary seasonally. For this reason, **D-FLEX 7040** is a must in applications should be waited for it to dry.
- ❖ Application should be done at temperatures between +10°C and +25 °C.

### Storage and Shelf life

It can be stored in its unopened original packaging, stacked up to 10 times, in a dry and moisture-free environment, protected from sunlight and frost for a maximum of 1 year from the date of production.

# DEHA<sub>marine</sub>

DEHA MARINE İÇ ve DIŞ TİC. LTD. ŞTİ.

Esenyalı Mah. Yanyol Cad. Varyap Plaza No:61 No:102 | Pendik / İstanbul

Mail: info@dehamarine.com



# D-FLEX

## 7050 FLX

Marine Floor Filling



### D-FLEX 7050 FLX (Floor Filling)

Deha Marine's MED/IMO-certified fiber-reinforced, self-leveling marine screed. Applicable on steel, galvanized, concrete, and timber floors, it can be installed in a thickness range of 3–50 mm. It becomes walkable within 1–2 hours, ready for tiling in 1–2 hours, and suitable for carpet, vinyl, or wood flooring in 24 hours (at 5 mm thickness). With a consumption rate of approx. 1.7 kg/m<sup>2</sup> per mm, it offers high efficiency. Certified to A-60 fire class and compliant with the IMO FTP Code, it ensures a safe and durable subfloor solution for marine applications

### Areas of Use

D-Flex 7050 FLX is a high-performance, fiber-reinforced, cement-based self-leveling floor screed, designed for smoothing uneven internal surfaces. It is ideal for renovation projects and compatible with wooden subfloors and underfloor heating systems.

**DEHA**marine

**DEHA MARINE İÇ ve DIŞ TİC. LTD. ŞTİ.**  
Esenyalı Mah. Yanyol Cad. Varyap Plaza No:61 No:102 | Pendik / İstanbul  
Mail: [info@dehamarine.com](mailto:info@dehamarine.com)

## SHIPBUILDING INSULATION



0437 / 25

# D-FLEX

## 7050 FLX

Marine Floor Filling

### Application Limits

- ❖ Not suitable for outdoor use
- ❖ Should not be used on substrates with rising damp
- ❖ Not intended as a final wearing surface
- ❖ In high-moisture areas (e.g. bathrooms), waterproofing is recommended prior to use

### Surface Preparation

- ❖ Subfloors must be dry, solid, and free from dust, paint, oil, or other contaminants
- ❖ Remove weak or loose materials
- ❖ Timber substrates must be at least 18 mm thick, structurally stable, and well-secured
- ❖ Gaps and joints must be sealed to avoid leakage
- ❖ Use primer to improve bonding and reduce air bubbles
- ❖ On critical areas, D-Flex reinforcing mesh should be embedded in the substrate
- ❖ If applying over bitumen residues, the surface must be clean and stable; a 10 mm minimum layer is required and priming is essential

### Technical Features

- ❖ Self-smoothing formulation for an even surface
- ❖ Fiber-enhanced for improved strength and flexibility
- ❖ Ready for tiling after 1–2 hours (at 20°C)
- ❖ Can be applied in layers up to 50 mm thick
- ❖ Excellent adhesion to difficult substrates
- ❖ Suitable for timber and heated floors
- ❖ Low-dust technology ensures a cleaner working environment

### Application

- ❖ Application Temperature: +5 °C to +30 °C
- ❖ Mix 25 kg of D-Flex 7050 FLX with 5 liters of clean water using a slow speed mixer (approx. 250 rpm)
- ❖ Mix for 2 minutes until a smooth, lump-free consistency is achieved
- ❖ Let the mix stand for 2 minutes before application
- ❖ Pour and spread with a steel trowel or spike roller
- ❖ Do not exceed 50 mm in a single layer
- ❖ Minimum thickness over timber is 10 mm
- ❖ Product must be covered with a suitable floor finish after drying

### Overlay & Drying Time

- ❖ Tiles can be installed after 1–2 hours (depending on site conditions)
- ❖ Final floor finishes should be installed after 24 hours for 5 mm thickness
- ❖ If needed, the surface can be sanded after 48 hours
- ❖ Not designed for painting or as a finished floor

### Storage and Shelf Life

- ❖ Store unopened bags in a dry and cool environment above +5°C.
- ❖ Under proper storage conditions, shelf life is 12 months from the date of manufacture.

### Technical Specification

- ❖ Recommended application temperature: +5°C to +30°C
  - ❖ Minimum substrate strength:  $\geq 1$  N/mm<sup>2</sup>
  - ❖ Minimum thickness over under-tile heating wires: >3 mm
  - ❖ Minimum thickness over underfloor heating pipes: >15 mm
  - ❖ Minimum thickness on solid substrates with slip membrane: 20 mm
  - ❖ Minimum thickness on floating floor systems: 25 mm
  - ❖ Minimum thickness on timber floors: 10 mm
  - ❖ Maximum application thickness: 50 mm
  - ❖ Water requirement: 5 litres per 25 kg (20%)
  - ❖ Compressive strength: Class C25
  - ❖ Flexural strength: Class F5
  - ❖ Material consumption: Approx. 1.7 kg/m<sup>2</sup> per mm thickness
  - ❖ Walkable (light foot traffic): After 1–2 hours\*\*
  - ❖ Ready for tiling: After 1–2 hours\*\*
  - ❖ Ready for carpet, vinyl or wood flooring: After 24 hours (at 5 mm thickness)\*\*
  - ❖ Working time (pot life): Approx. 20 minutes
- Note: All drying and setting times are measured at 20°C and may vary depending on ambient humidity and conditions.
- ❖ **Fire Class: A -60**



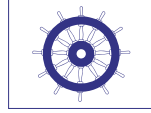
DEHA MARINE İÇ ve DIŞ TİC. LTD. ŞTİ.

Esenyalı Mah. Yanyol Cad. Varyap Plaza No:61 No:102 | Pendik / İstanbul

Mail: info@dehamarine.com

## SHIPBUILDING INSULATION

# D-FLEX



0437 / 25

## SC 520

Flooring Adhesive



### D-FLEX SC 520

A high-performance marine adhesive widely used in shipbuilding. As a reliable flooring adhesive, it provides strong bonding, easy application, and long-lasting results. Being a MED-certified product, it ensures compliance with international safety and quality standards. Ideal for ship flooring and professional marine applications.

#### Application Areas

##### Compatible Floor Coverings:

- ❖ Vinyl (sheet & tile)
- ❖ Rubber (sheet & tile up to 4 mm)
- ❖ Carpet with standard backing
- ❖ Linoleum (up to 3 mm)
- ❖ Cushioned vinyl (sheet & tile)
- ❖ Luxury Vinyl Tile (LVT)
- ❖ Vinyl Composition Tile (VCT)
- ❖ Residential & commercial spaces

##### Suitable Substrates:

- ❖ Porous & non-porous surfaces
- ❖ Cement-based self-leveling compounds & patches
- ❖ Properly prepared, primed gypsum (ASTM F2419 compliant)
- ❖ Resilient insulating & soundproof underlays
- ❖ Radiant heating systems (hydronic & electric)

#### Key Advantages of D-Flex SC 520

##### Performance & Durability

- ❖ Multi-purpose adhesive for various flooring types
- ❖ Strong resistance to moisture and plasticizers
- ❖ High solids content ensures excellent bonding
- ❖ Wide coverage for cost-efficient application

##### Health & Environmental Compliance

- ❖ Low VOC (< 20 g/l), meets SCAQMD Rule 1168
- ❖ EMICODE-certified for strict indoor air quality standards
- ❖ Compliant with California Section 01350
- ❖ Supports LEED v4 (EQc2 - Low Emitting Materials)

##### Application Benefits

- ❖ Works in environments with up to 85% RH
- ❖ Reduces material shrinkage risk
- ❖ Strong, durable adhesion for long-term reliability
- ❖ Eco-friendly and contributes to healthier indoor spaces

#### Substrate Preparation

##### Surface Requirements

- ❖ Must be **stable, dry, crack-free and clean** (no dust, grease, oil, paint, or wax).
- ❖ Moisture levels must meet industry standards before installation.

# DEHAMARINE

DEHA MARINE İÇ ve DIŞ TİC. LTD. ŞTİ.

Esenyalı Mah. Yanyol Cad. Varyap Plaza No:61 No:102 | Pendik / İstanbul

Mail: info@dehamarine.com

## SHIPBUILDING INSULATION

# D-FLEX



## SC 520

Flooring Adhesive

### Technical Specifications

#### Packaging

- ❖ 1 gal. (4.7 kg / 3.9 l) plastic pail
- ❖ 3 gal. (14 kg / 11.35 l) plastic pail

#### Storage & Appearance

- ❖ Shelf Life: 12 months (in original packaging, 73°F / 23°C)
- ❖ Color: White

#### Coverage (Varies by substrate & trowel angle)

- ❖ 1 gal. pail: 75 – 210 sq. ft.
- ❖ 3 gal. pail: 225 – 630 sq. ft.
- ❖ Per gallon: 75 – 210 sq. ft. (239 – 676 g/m<sup>2</sup>)

#### Application Conditions

- ❖ Min. Floor Temperature: 65°F (10°C)
- ❖ Ideal Floor Temperature: 64 – 77°F (18 – 25°C)

#### Performance & Drying

- ❖ Flash Time: See coverage section
- ❖ Working Time: 15 min – 2 hours\*
- ❖ Set to Traffic: 24 – 72 hours\*
- ❖ Final Strength: 5 days\*
- ❖ Welding / Sealing Joints: 24 hours\*
- ❖ Flash Point (ASTM D56): > 300°F (> 150°C)
- ❖ Percent Solids: > 70%

#### Environmental Compliance

- ❖ VOC Content: < 20 g/l (Compliant with SCAQMD Rule 1168)
- ❖ \*Based on 70°F (21°C) and 65% relative humidity. Flash & working times may vary with temperature, humidity, and substrate conditions.

### Application Instructions

#### Pre-Installation Requirements

- ❖ Maintain 65°F (18°C) minimum in the work area 48 hours before, during and after installation.
- ❖ Use the recommended notched trowel for adhesive application.  
For wet-set installations, ensure the adhesive is moist to the touch before laying flooring.
- ❖ Apply the correct adhesive amount based on job conditions.

#### Installation Process

##### For Sheet Flooring:

- ❖ Place the material into the adhesive immediately.
- ❖ Roll with a 100 lb. roller in both directions.
- ❖ Ensure lifting edges or curled ends are pressed down during bonding.

##### For Tile Flooring:

- ❖ Position tiles into the adhesive and roll within 15 minutes using a 100 lb. roller in both directions.
- ❖ Avoid indentations by working off the flooring or using knee boards.
- ❖ Ensure at least 80% adhesive transfer to the floor backing.

**Tip:** After troweling, roll the adhesive with a **short nap roller (lightly coated with adhesive)** to **flatten ridges** and prevent them from showing through the finished floor.

# DEHA<sub>marine</sub>

DEHA MARINE İÇ ve DIŞ TİC. LTD. ŞTİ.

Esenyalı Mah. Yanyol Cad. Varyap Plaza No:61 No:102 | Pendik / İstanbul

Mail: [info@dehamarine.com](mailto:info@dehamarine.com)



GEMİ İNŞA İZOLASYON



# D-FLEX

## PRIMECOAT

Primer



• D-FLEX PRIMECOAT is a water-based, colorless, solvent-free surface primer containing synthetic styrene/acrylic resin, developed for absorbent surfaces. It is used to reduce the absorbency of concrete, screed, gypsum, and similar mineral surfaces, stabilize the substrate, and improve adhesion of subsequent coatings, leveling screeds, or adhesives.

In addition to general construction applications, the product can also be used in shipyards and shipbuilding projects on suitable absorbent substrates, such as screeded living areas, cabins, corridors, and dry technical spaces, for surface preparation.

### Areas of Application

- Concrete floors and cement-based screeds
- Gypsum plaster, drywall, lime plaster
- Absorbent surfaces such as aerated concrete, cement boards, and chipboard
- Primer application before cement- or gypsum-based leveling screeds
- Surface preparation before self-levelling screed applications
- Balancing absorbent substrates prior to ceramic adhesive and coating applications
- Use as a primer on floors and walls in shipyards and shipbuilding projects where surface conditions are suitable

## DEHA<sub>marine</sub>

DEHA MARINE İÇ ve DIŞ TİC. LTD. ŞTİ.

Adres: Esenyalı mah. Yanyol cad. VARYAP Plaza No:61 Kapı No:77 | Pendik / İstanbul  
mail: info@dehamarine.com

## GEMİ İNŞA İZOLASYON



# D-FLEX

## PRIMECOAT

### Key Product Features

- ❖ Acrylic-based, solvent-free, water-based formulation
- ❖ Improves adhesion on absorbent surfaces
- ❖ Balances surface absorbency, reduces dusting, enhances bonding
- ❖ Fast drying, suitable for tight work schedules
- ❖ Ready to use; easy application by roller or brush
- ❖ Helps reduce air bubbles and rapid water absorption issues in self-levelling screed and coating systems

### Technical Properties

- ❖ (Measured at  $23 \pm 2$  °C and  $50 \pm 5\%$  relative humidity)  
Chemical structure: Acrylic-based, solvent-free
- ❖ Color / appearance & consistency: White liquid, transparent after drying
- ❖ Density:  $1.05 \pm 0.05$  g/ml
- ❖ pH: 7.0 – 9.0
- ❖ Solid content:  $20\% \pm 3$
- ❖ Consumption:  $100\text{--}150$  g/m<sup>2</sup> (depending on surface absorbency)
- ❖ Shelf life: 12 months in original unopened packaging under proper storage conditions
- ❖ Values may vary depending on surface absorbency, temperature, and humidity.

### Surface Preparation and Application Conditions

- ❖ Surfaces must be dry, clean, sound, and free from dust, oil, dirt, and loose particles.
- ❖ Weak or loose layers must be removed mechanically.
- ❖ Damaged areas should be repaired with suitable repair mortars and cracks filled.  
urfaces must be protected from rain, water leakage, and excessive moisture during application.
- ❖ Drying time: Approx. 1 hour
- ❖ Curing time: Approx. 6–8 hours
- ❖ Application temperature (ambient & surface):  $+5$  °C to  $+30$  °C
- ❖ Substrate temperature: Above  $+5$  °C

### Application Instructions

#### Mixing

The product is ready to use. Stir briefly before application to ensure homogeneity.

#### Dilution

#### ❖ Before self-levelling screed applications:

Apply undiluted or diluted with water at a ratio of 1 : 0.5 in one coat, depending on substrate condition and absorbency.

Ensure the primer is fully dry before applying screed or coating systems.

#### ❖ For moisture protection of absorbent surfaces:

Apply undiluted.

#### ❖ As a gypsum primer:

Dilute with water at a ratio of 1 : 6.

#### Application Method

Apply evenly using a roller or brush to form a continuous film. Avoid pooling and ensure uniform coverage.

#### Consumption

Average consumption is  $100\text{--}150$  g/m<sup>2</sup> and may vary depending on surface absorbency, roughness, and application method.

For shipyard and shipbuilding sites, especially on highly absorbent screed surfaces, it is recommended to calculate consumption based on a sample application area during the survey stage.

#### Important Notes

- ❖ Do not apply on wet, damp, dusty, or dirty surfaces.
- ❖ Do not use on non-absorbent or glossy surfaces.
- ❖ Do not exceed recommended dilution ratios.
- ❖ Do not mix with chemicals or liquids other than water.
- ❖ Ensure ambient and surface temperatures remain above  $+5$  °C during application.
- ❖ Avoid application under strong wind, direct sunlight, or extreme heat, as these conditions may cause rapid water loss and reduced performance.
- ❖ Do not apply self-levelling screed before the primer has fully dried.

#### Storage and Shelf Life

- ❖ Store in original, unopened packaging.
- ❖ Keep in cool, dry, moisture-free areas away from direct sunlight.
- ❖ Protect from freezing.
- ❖ Shelf life is 12 months from production date when stored between  $+10$  °C and  $+35$  °C.

#### Packaging

- ❖ 10 kg plastic container
- ❖ 20 kg plastic container

#### Safety Precautions

- ❖ Use appropriate personal protective equipment (goggles, gloves, dust mask, etc.) before application.
- ❖ Avoid direct contact with eyes and skin.
- ❖ In case of contact, rinse immediately with plenty of water and consult a medical professional.
- ❖ Clean all tools with water immediately after use.



DEHA MARINE İÇ ve DIŞ TİC. LTD. ŞTİ.

Adres: Esenyalı mah. Yanyol cad. VARYAP Plaza No:61 Kapı No:77 | Pendik / İstanbul  
mail: info@dehamarine.com

## SHIPBUILDING INSULATION

# D-FLEX

## MARINS TP115



0437 / 25



### Certificates

Module D: ME-C-0550/D/1/25  
Module B: ME-C-0549/B/1/25



### Material

Glass cloth, weight 115 g/m<sup>2</sup>



### Adhesive

Acrylic adhesive, water-resistant

### Installation temperatures



Must be applied on a dry surface at temperatures between +5°C and +35°C.

### Operating temperatures



Ranges from -25°C to +70°C.

### Surface Conditions



Surfaces must be dry, clean, and free from dust and grease.

### Storage temperatures



Should be kept between -5°C and +30°C in a dry environment, protected from UV exposure.

### Dimensions



Width: 70mm, Length: 50m

# DEHA<sub>marine</sub>

DEHA MARINE İÇ ve DIŞ TİC. LTD. ŞTİ.

Esenyalı Mah. Yanyol Cad. Varyap Plaza No:61 No:102 | Pendik / İstanbul

Mail: [info@dehamarine.com](mailto:info@dehamarine.com)



SHIPBUILDING INSULATION

# D-FLEX

## MARINS TP115



0437 / 25



### Heat & Fire Protection

MARINS TP115 is certified in compliance with IMO regulations.



### Easy & Effortless Setup

Self-adhesive tape for joint sealing.



### Quick & Time-Saving Assembly

Equipped with a fingerlift.



### MARINS TP115

A self-adhesive glass cloth tape specifically designed for sealing mineral wool insulation joints in marine applications. Certified with IMO low flame spread and approved under MED Module B/D, it meets international maritime fire safety standards. With its 115 g/m<sup>2</sup> glass cloth carrier and acrylic, water-resistant adhesive, it ensures durable and long-lasting bonding. Supplied in 70 mm × 50 m rolls, it can be easily applied between +5 °C and +35 °C and performs reliably within -25 °C to +70 °C. Thanks to its high performance, fire resistance, and easy application, MARINS TP115 is a trusted solution for shipbuilding and refit projects as a marine joint sealing tape and fire-resistant insulation tape.

### User Instructions

- ❖ Before installing MARINS TP115, its use must be verified with the shipyard and the class surveyor.
- ❖ Additionally, MARINS TP115 should be firmly applied to glass cloth-faced mineral wool products using a scraper.
- ❖ It is essential to ensure that MARINS TP115 is pressed with adequate contact pressure on faced lightweight mineral wool products.

# DEHA<sub>marine</sub>

DEHA MARINE İÇ ve DIŞ TİC. LTD. ŞTİ.

Esenyalı Mah. Yanyol Cad. Varyap Plaza No:61 No:102 | Pendik / İstanbul

Mail: [info@dehamarine.com](mailto:info@dehamarine.com)



## SHIPBUILDING INSULATION

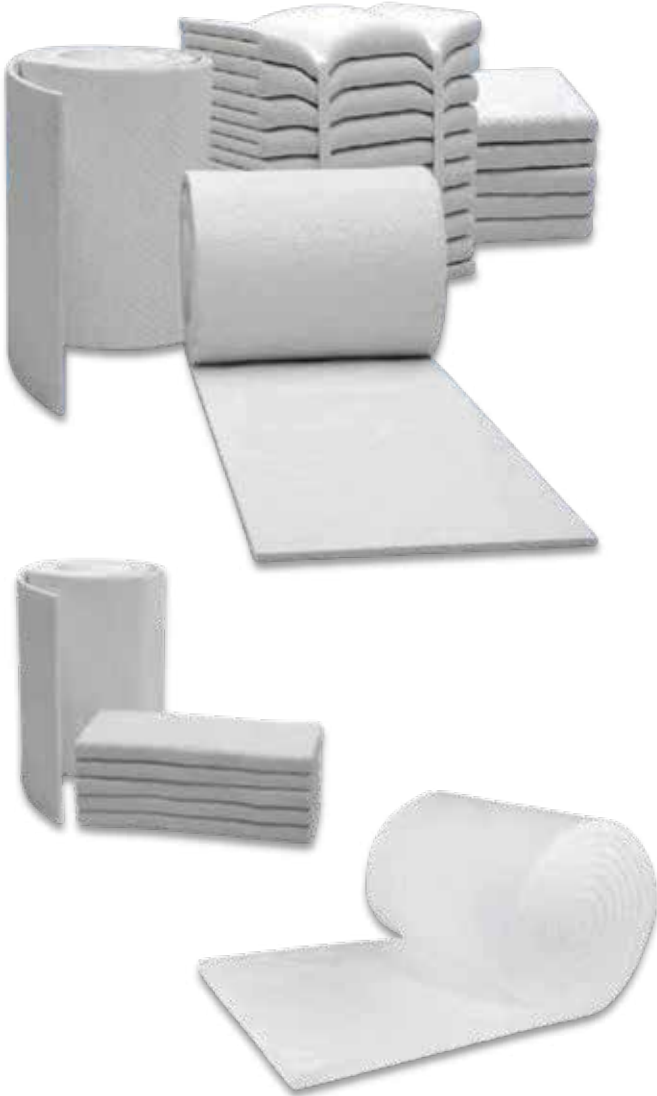
# D-WOOL



0437 / 25

## CFB1260

Ceramic Fiber Blanket 1260°C HP



## D-WOOL CFB1260

A MED certified ceramic fiber blanket designed for marine and industrial insulation. Fully compliant with IMO FTP Code and SOLAS standards, it provides thermal resistance up to 1260°C and A60 fire protection. With its lightweight, flexible, and easy-to-install structure, it is widely used in ship insulation, pipe and equipment coverings, boilers, and exhaust systems. Thanks to its high fire resistance and durability, D-WOOL CFB1260 stands out among marine insulation solutions, ensuring both safety and energy efficiency.

### Areas of Usage

- ❖ Furnace, kiln, reformer and boiler linings
- ❖ Investment casting mold wrappings
- ❖ Removable insulating blankets for stress relieving welds
- ❖ Reusable insulation for steam and gas turbines
- ❖ Flexible high-temperature pipe
- ❖ Pressure and cryogenic vessel fire protection
- ❖ High-temperature kiln, furnace, gasketing & filtration
- ❖ Furnace door linings and furnace repairs
- ❖ Soaking pit seals
- ❖ Thermal reactor insulation
- ❖ Expansion joint seals
- ❖ Primary reformer header insulation
- ❖ Glass furnace crown insulation
- ❖ Incineration equipment and stack linings
- ❖ Annealing cover seals
- ❖ Nuclear insulation applications
- ❖ Atmosphere furnace lining
- ❖ Field steam generator lining
- ❖ Chemical process heaters

### Physical Properties

- ❖ **Colour:** White
- ❖ **Classification Temperature (°C):** 1260 °C
- ❖ **Usage Temperature (°C):** 1200 °C
- ❖ **Linear Shrinkage After Heating (%):** 1200 °C, 24 saat / < %3,0
- ❖ **Density (kg/m³):** (Tolerance: -10% / +5%) 64 96 110 128 160
- ❖ **Thickness (mm):** 13 mm (Tolerance: -1 / +10), 25 mm (Tolerance: -5 / +10), 38 mm (Tolerance: -8 / +10), 50 mm (Tolerance: -10 / +10)
- ❖ **Length (mm):** (Tolerance: -10 / +10) 14400 mm, 7200 mm, 4730 mm, 3600 mm
- ❖ **Width (mm):** (Tolerance: -5 / +10) 610 mm
- ❖ **Tensile Strength (MPa):** 64 kg/m³: >0,03 Mpa, 96 kg/m³: > 0,05 Mpa, 110 kg/m³: > 0,055 Mpa, 128 kg/m³: > 0,06 Mpa, 160 kg/m³: > 0,075 Mpa



# DEHAMARINE

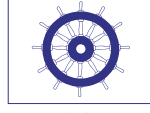
DEHA MARINE İÇ ve DIŞ TİC. LTD. ŞTİ.

Esenyalı Mah. Yanyol Cad. Varyap Plaza No:61 No:102 | Pendik / İstanbul

Mail: [info@dehamarine.com](mailto:info@dehamarine.com)

## SHIPBUILDING INSULATION

# D-WOOL



### CFB1260

Ceramic Fiber Blanket 1260°C HP



#### Areas of Usage

- ❖ Furnace, kiln, reformer and boiler linings
- ❖ Investment casting mold wrappings
- ❖ Removable insulating blankets for stress relieving welds
- ❖ Reusable insulation for steam and gas turbines
- ❖ Flexible high-temperature pipe
- ❖ Pressure and cryogenic vessel fire protection
- ❖ High-temperature kiln, furnace, gasketing & filtration
- ❖ Furnace door linings and furnace repairs
- ❖ Soaking pit seals
- ❖ Thermal reactor insulation
- ❖ Expansion joint seals
- ❖ Primary reformer header insulation
- ❖ Glass furnace crown insulation
- ❖ Incineration equipment and stack linings
- ❖ Annealing cover seals
- ❖ Nuclear insulation applications
- ❖ Atmosphere furnace lining
- ❖ Field steam generator lining
- ❖ Chemical process heaters

#### Physical Properties

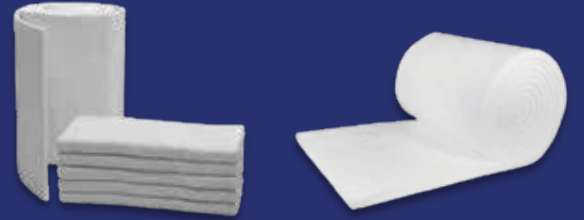
- ❖ **Colour:** White
- ❖ **Classification Temperature (°C):** 1260 °C
- ❖ **Usage Temperature (°C):** 1200 °C
- ❖ **Linear Shrinkage After Heating (%):** 1200 °C, 24 saat / < %3,0
- ❖ **Density (kg/m³):** (Tolerance: -10% / +5%) 64 96 110 128 160
- ❖ **Thickness (mm):** 13 mm (Tolerance: -1 / +10), 25 mm (Tolerance: -5 / +10), 38 mm (Tolerance: -8 / +10), 50 mm (Tolerance: -10 / +10)
- ❖ **Length (mm):** (Tolerance: -10 / +10) 14400 mm, 7200 mm, 4730 mm, 3600 mm
- ❖ **Width (mm):** (Tolerance: -5 / +10) 610 mm
- ❖ **Tensile Strength (MPa):** 64 kg/m³: >0,03 Mpa, 96 kg/m³: > 0,05 Mpa, 110 kg/m³: > 0,055 Mpa, 128 kg/m³: > 0,06 Mpa, 160 kg/m³: > 0,075 Mpa

#### Thermal Properties Table

Density (kg/m³)	Temp (°C)	Thermal Conductivity(W/mK)			Thermal Resistance(m²K/W)		
		13mm	25mm	50mm	13mm	25mm	50mm
64	400	0.12	0.12	0.12	0.1	0.20	0.41
64	600	0.19	0.19	0.19	0.06	0.13	0.26
64	800	0.27	0.27	0.27	0.04	0.09	0.18
96	400	0.1	0.1	0.1	0.13	0.25	0.50
96	600	0.16	0.16	0.16	0.08	0.15	0.31
96	800	0.20	0.20	0.20	0.06	0.12	0.25
110	400	0.1	0.1	0.1	0.13	0.25	0.50
110	600	0.16	0.16	0.16	0.08	0.15	0.31
110	800	0.20	0.20	0.20	0.06	0.12	0.25
128	400	0.1	0.1	0.1	0.13	0.25	0.50
128	600	0.16	0.16	0.16	0.08	0.15	0.31
128	800	0.20	0.20	0.20	0.06	0.12	0.25
160	400	0.9	0.9	0.9	0.14	0.27	0.55
160	600	0.14	0.14	0.14	0.09	0.17	0.35
160	800	0.17	0.17	0.17	0.07	0.14	0.29

#### Storage and Shelf life

- ❖ Product packages should be placed on at least one pallet which should not be in direct contact with the ground at storage area.
- ❖ Product packages should be protected from water, moisture and sunlight in the storage area.
- ❖ Appropriate work safety clothing and equipment must be used to protect the skin, eye and upper respiratory system during transport.
- ❖ Products must be covered with a tarpaulin when shipped.
- ❖ Do not leave any material on the products in such a way as to damage the package and the product.
- ❖ Palletized products should not be stacked and stored on top of each other.
- ❖ The opened packages must not be disposed of and must be disposed of in accordance with the regulations.



# DEHAMARINE

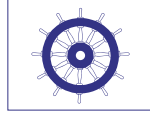
DEHA MARINE İÇ ve DIŞ TİC. LTD. ŞTİ.

Esenyalı Mah. Yanyol Cad. Varyap Plaza No:61 No:102 | Pendik / İstanbul

Mail: info@dehamarine.com

## SHIPBUILDING INSULATION

**D-WOOL**  
BIOSOLUBLE



### CFBB1000

Ceramic Fiber Blanket 1000°C Biosoluble



### D-WOOL CFBB1000

A biosoluble MED certified ceramic fiber blanket developed

with a focus on safety and sustainability. Manufactured in compliance with IMO FTP Code and SOLAS standards, it offers thermal resistance up to 1100°C and A60 fire safety. It is commonly used in ship insulation, engine and exhaust systems, and industrial equipment exposed to high temperatures. With its lightweight structure, easy installation, and eco-friendly biosoluble composition, D-WOOL CFBB1000 is one of the most reliable marine insulation solutions for both safety and sustainability.

### Areas of Usage

- ❖ It is used in the related areas for insulation and fire safety of high temperature applications.

### Physical Properties

- ❖ Colour: White
- ❖ Classification Temperature (°C): 1100 °C
- ❖ Usage Temperature (°C): 1000 °C
- ❖ Linear Shrinkage After Heating (%): 1000 °C, 24 saat / < %3.0
- ❖ Density (kg/m<sup>3</sup>): (Tolerance: -10% / +5%) 64 96 110 128 160
- ❖ Thickness (mm): 13 mm (Tolerance: -1 / +10), 25 mm (Tolerance: -5 / +10) 50 mm (Tolerance: -10 / +10)
- ❖ Length (mm): (Tolerance: -10 / +10) 14400 mm / 7200 mm / 3600 mm
- ❖ Width (mm): (Tolerance: -5 / +10) 610 mm
- ❖ Tensile Strength (MPa): 64 kg/m<sup>3</sup>: 0.04 Mpa, 96 kg/m<sup>3</sup>: 0.04 Mpa, 110 kg/m<sup>3</sup>: 0.04 MPa



**DEHA**marine

DEHA MARINE İÇ ve DIŞ TİC. LTD. ŞTİ.

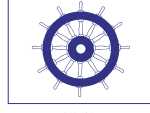
Esenyalı Mah. Yanyol Cad. Varyap Plaza No:61 No:102 | Pendik / İstanbul

Mail: info@dehamarine.com

## SHIPBUILDING INSULATION

# D-WOOL

BIOSOLUBLE



0437 / 25

### CFBB1000

Ceramic Fiber Blanket 1000°C Biosoluble

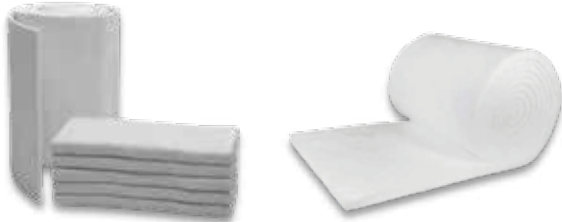


#### Areas of Usage

- ❖ It is used in the related areas for insulation and fire safety of high temperature applications.

#### Physical Properties

- ❖ **Colour:** White
- ❖ **Classification Temperature (°C):** 1100 °C
- ❖ **Usage Temperature (°C):** 1000 °C
- ❖ **Linear Shrinkage After Heating (%):** 1000 °C, 24 saat / < %3.0
- ❖ **Density (kg/m³):** (Tolerance: -10% / +5%) **64 96 110 128 160**
- ❖ **Thickness (mm):** **13 mm** (Tolerance: -1 / +10), **25 mm** (Tolerance: -5 / +10) **50 mm** (Tolerance: -10 / +10)
- ❖ **Length (mm):** (Tolerance: -10 / +10) **14400 mm / 7200 mm / 3600 mm**
- ❖ **Width (mm):** (Tolerance: -5 / +10) **610 mm**
- ❖ **Tensile Strength (MPa):** **64 kg/m³: 0.04 Mpa, 96 kg/m³: 0.04 Mpa, 110 kg/m³: 0.04 Mpa**



#### Thermal Properties Table

Density (kg/m³)	64kg/m³		64kg/m³		64kg/m³	
	13mm	25mm	25mm	50mm	50mm	50mm
C°	(W/mK)	(m²K/W)	(W/mK)	(m²K/W)	(W/mK)	(m²K/W)
400 C°	0,12	0,1	0,12	0,20	0,12	0,41
600 C°	0,19	0,06	0,19	0,13	0,19	0,26
800 C°	0,27	0,04	0,27	0,9	0,27	0,18
Density (kg/m³)	96kg/m³		96kg/m³		96kg/m³	
	13mm	25mm	25mm	50mm	50mm	50mm
C°	(W/mK)	(m²K/W)	(W/mK)	(m²K/W)	(W/mK)	(m²K/W)
400 C°	0,1	0,13	0,1	0,25	0,1	0,50
600 C°	0,16	0,08	0,16	0,15	0,16	0,31
800 C°	0,20	0,06	0,20	0,12	0,20	0,25
Density (kg/m³)	110kg/m³		110kg/m³		110kg/m³	
	13mm	25mm	25mm	50mm	50mm	50mm
C°	(W/mK)	(m²K/W)	(W/mK)	(m²K/W)	(W/mK)	(m²K/W)
400 C°	0,1	0,13	0,1	0,25	0,1	0,50
600 C°	0,16	0,08	0,16	0,16	0,16	0,31
800 C°	0,20	0,06	0,20	0,20	0,20	0,25
Density (kg/m³)	128kg/m³		128kg/m³		128kg/m³	
	13mm	25mm	25mm	50mm	50mm	50mm
C°	(W/mK)	(m²K/W)	(W/mK)	(m²K/W)	(W/mK)	(m²K/W)
400 C°	0,1	0,13	0,1	0,25	0,1	0,50
600 C°	0,16	0,08	0,16	0,16	0,16	0,31
800 C°	0,20	0,06	0,20	0,20	0,20	0,25
Density (kg/m³)	160kg/m³		160kg/m³		160kg/m³	
	13mm	25mm	25mm	50mm	50mm	50mm
C°	(W/mK)	(m²K/W)	(W/mK)	(m²K/W)	(W/mK)	(m²K/W)
400 C°	0,09	0,14	0,09	0,27	0,09	0,55
600 C°	0,14	0,09	0,14	0,17	0,14	0,35
800 C°	0,17	0,07	0,17	0,14	0,17	0,29

#### Storage and Shelf life

- ❖ Product packages should be placed on at least one pallet which should not be in direct contact with the ground at storage area.
- ❖ Product packages should be protected from water, moisture and sunlight in the storage area.
- ❖ Appropriate work safety clothing and equipment must be used to protect the skin, eye and upper respiratory system during transport.
- ❖ Products must be covered with a tarpaulin when shipped.
- ❖ Do not leave any material on the products in such a way as to damage the package and the product.
- ❖ Palletized products should not be stacked and stored on top of each other.
- ❖ The opened packages must not be disposed of and must be disposed of in accordance with the regulations.



# DEHAMARINE

DEHA MARINE İÇ ve DIŞ TİC. LTD. ŞTİ.

Esenyalı Mah. Yanyol Cad. Varyap Plaza No:61 No:102 | Pendik / İstanbul

Mail: info@dehamarine.com



# FURNISHING SOLUTIONS

- ❖ **Sofa Plus**
- ❖ **Soft & Opaque Curtain**
- ❖ **Solar Shade Curtain**
- ❖ **Med Certificated Mattresses**
  - Marine Mattresses
  - Ocean Mattresses
  - Armada Mattresses
  - Yacht Mattresses



0437 / 25

## Med Certificated Sofa Sofa Plus



## Sofa Marine

The Deha Marine Sofa is an IMO/MED certified marine sofa designed specifically for ship interiors. Its fire-resistant and MED-compliant upholstery meets international safety standards, while ergonomic cushioning ensures lasting comfort for both passengers and crew. With a modular design that optimizes space and optional storage features, it combines functionality with durability. Built from materials resistant to fading, water, and UV exposure, the sofa delivers long-term performance in demanding marine environments. A trusted choice for shipyards, yacht builders, and marine operators seeking reliable and modern seating solutions.

We are able to manufacture products in requested dimensions.

Constituted of :

- ❖ **Covering material:** leather imitation fabric (PVC 80%/polyester 18%/vinyl acrylic 2%) - thickness 1.2 mm  $\pm 5\%$ , weight 750 g/m<sup>2</sup>  $\pm 5\%$ , various colours
- ❖ **Interliner:** 100% FR polyester white plain weave woven fibers - thickness 16 mm  $\pm 5\%$ , weight 200 g/m<sup>2</sup>
- ❖ **Padding:** Grey FR PU foam - thickness 20-350 mm, density 32 $\pm 1$  kg/m<sup>3</sup>

# DEHA<sub>marine</sub>

DEHA MARINE İÇ ve DIŞ TİC. LTD. ŞTİ.

Esenyalı Mah. Yanyol Cad. Varyap Plaza No:61 No:102 | Pendik / İstanbul

Mail: info@dehamarine.com

FURNISHING SOLUTIONS



## Med Certificated Curtain Soft & Opaque Curtain



### Curtain

IMO MED certified flame-retardant Soft Curtain combines safety and aesthetics for marine interiors. Its lightweight structure ensures easy handling, while its durable design withstands harsh sea conditions. Offering modern elegance, safety compliance, and long-lasting use, it is a trusted solution in global maritime projects.

IMO MED certified Opaque Curtain delivers complete blackout performance, flame-retardant safety, and outstanding durability for marine interiors. Built for long-term use under demanding conditions, it enhances comfort, energy efficiency, and safety standards, making it a preferred choice in modern shipbuilding and outfitting projects.

**We are able to manufacture products in  
requested dimensions.**

### Soft Fabric

- ❖ Composition 100% polyester woven fabric with fire-retardant treatment, various colours
- ❖ Mass per unit area  $290 \text{ g/m}^2 \pm 10 \text{ g/m}^2$

### Opaque Fabric

- ❖ Composition 100% polyester woven fabric with fire-retardant treatment, various colours
- ❖ Mass per unit area  $430 \text{ g/m}^2 \pm 10 \text{ g/m}^2$

**DEHA**marine

**DEHA MARINE İÇ ve DIŞ TİC. LTD. ŞTİ.**

Esenyalı Mah. Yanyol Cad. Varyap Plaza No:61 No:102 | Pendik / İstanbul

Mail: [info@dehamarine.com](mailto:info@dehamarine.com)

FURNISHING SOLUTIONS



0437 / 25

## Med Certificated Curtain Solar Shade Curtain



### Solar Shade

An IMO/MED certified shading system specially designed for ships. Meeting international standards, it ensures safety and quality in every use. The system effectively filters sunlight, providing UV protection while reducing glare and reflection, creating a safer and more comfortable environment for crew and passengers.

Beyond comfort, Solar Shade enhances energy efficiency by stabilizing interior temperatures, reducing air conditioning loads, and contributing to fuel savings. Its robust mechanism guarantees long-lasting durability and reliable performance even in harsh marine conditions.

For shipyards, shipowners, and operators seeking IMO/MED certified marine solar shade systems, Deha Marine offers a trusted and innovative solution.

Solar shade curtains are designed to reduce heat and glare while maintaining natural light and visibility. Ideal for marine environments, they enhance comfort and energy efficiency on board. Available in various materials and styles to suit different interior needs.

**DEHA**marine

**DEHA MARINE İÇ ve DIŞ TİC. LTD. ŞTİ.**

Esenyalı Mah. Yanyol Cad. Varyap Plaza No:61 No:102 | Pendik / İstanbul

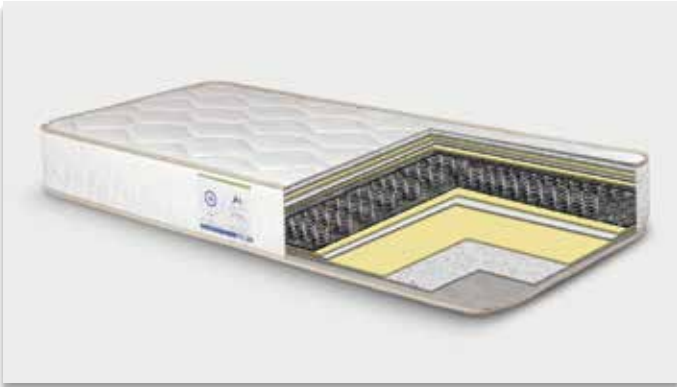
Mail: [info@dehamarine.com](mailto:info@dehamarine.com)



0437 / 25

## Med Certificated Mattresses Marine Mattress

24 cm thickness



### Marine Mattress

A MED/IMO certified mattress for ships, designed for lasting comfort and safety. With its 24 cm thickness, a core of Bonnell springs and PUR foam supported by a felt layer, it ensures durability and shape retention. The 100% viscose woven cover provides breathability and temperature regulation, while fire-retardant foam and fabric deliver reliable protection for marine environments.

The Marine Mattress is designed for those seeking long-lasting comfort and support. It features a Bonnell spring core combined with high-density comfort foams to ensure balanced pressure distribution. The inner felt layer helps prevent sagging over time. Wrapped in 100% viscose fabric, it promotes airflow and regulates temperature throughout the night. With its non-flammable foam and fabric, it guarantees a safe and restful sleep in marine environments.

- ❖ MED/IMO CERTIFIED
- ❖ Fire Retardant
- ❖ Full Orthopedic
- ❖ Off-size Manufacturing
- ❖ 24 cm thickness
- ❖ 2 Years Warranty
- ❖ Best Price

Type/	Bonell springs & PUR foam
Coil thickness	14 cm
Foam	PUR
PUR foam density	28 kg/m3
Standard cover	Woven fabric of 100% Viscose
Color	Cream
Fire retardant	Yes
Safety tested	Yes

# DEHA<sub>marine</sub>

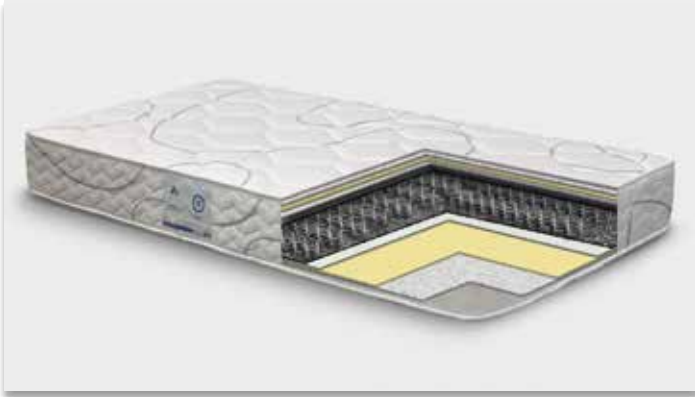
**DEHA MARINE İÇ ve DIŞ TİC. LTD. ŞTİ.**  
Esenyalı Mah. Yanyol Cad. Varyap Plaza No:61 No:102 | Pendik / İstanbul  
Mail: [info@dehamarine.com](mailto:info@dehamarine.com)

## Med Certificated Mattresses Ocean Mattress



0437 / 25

19 cm thickness



### The Ocean Mattress

A MED/IMO certified mattress for ships, combining comfort with safety. Featuring a 19 cm thickness, a Bonnell spring & PUR foam core, and high-density foam support, it is built for long-term use. The 35% viscose / 65% PES woven cover ensures airflow and freshness, while the fire-retardant foam and fabric provide compliance with marine fire safety standards.

Built with comfort and stability in mind, the Ocean Mattress features a durable Bonnell spring system and supportive high-density foams surrounding its core. Its internal felt layer resists sagging, while the breathable viscose fabric keeps the surface cool and fresh by allowing constant air circulation. Enhanced with fire-retardant foam and fabric, it offers both safety and all-night comfort, making it ideal for life at sea.

- ❖ MED/IMO CERTIFIED
- ❖ Fire Retardant
- ❖ Full Orthopedic
- ❖ Off-size Manufacturing
- ❖ 19 cm thickness
- ❖ 2 Years Warranty
- ❖ Best Price

Type	Bonell springs & PUR foam
Coil thickness	14 cm
Foam	PUR
PUR foam density	28 kg/m3
Standard cover	Woven fabric of 35%Viscose and 65% Pes
Color	White-Blue
Fire retardant	Yes
Safety tested	Yes

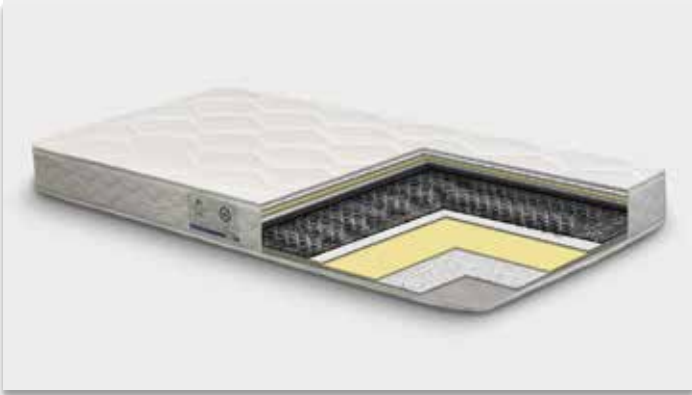
# DEHAMARINE

DEHA MARINE İÇ ve DIŞ TİC. LTD. ŞTİ.  
Esenyalı Mah. Yanyol Cad. Varyap Plaza No:61 No:102 | Pendik / İstanbul  
Mail: info@dehamarine.com

## Med Certificated Mattresses Armada Mattress



15 cm thickness



### Armada Mattress

A MED/IMO certified slim-profile mattress for ships, ideal for narrow cabins and bunk beds. With a 15 cm thickness, its felt layer prevents sagging and ensures stability. The 100% PES woven cover offers durability and practicality, while the fire-retardant foam and fabric meet international maritime safety standards.

The Armada Mattress is specially crafted for compact spaces without compromising comfort. With a slim 15 cm profile, it easily fits into narrow areas such as cabins or bunk beds. A felt layer inside helps maintain shape and prevents sagging, while its fire-resistant foam and fabric provide safe and secure rest. Ideal for space-conscious sleeping areas that still demand quality rest.

- ❖ MED/IMO CERTIFIED
- ❖ Fire Retardant
- ❖ Full Orthopedic
- ❖ Off-size Manufacturing
- ❖ 15 cm thickness
- ❖ 2 Years Warranty
- ❖ Best Price

Type	Bonell springs & PUR foam
Coil thickness	10 cm
Foam	PUR
PUR foam density	28 kg/m <sup>3</sup>
Standard cover	Woven fabric of 100% PES
Color	White
Fire retardant	Yes
Safety tested	Yes

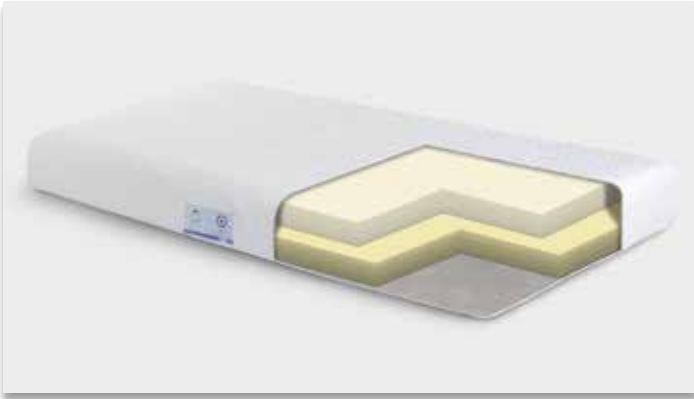
# DEHA<sub>marine</sub>

**DEHA MARINE İÇ ve DIŞ TİC. LTD. ŞTİ.**  
Esenyalı Mah. Yanyol Cad. Varyap Plaza No:61 No:102 | Pendik / İstanbul  
Mail: [info@dehamarine.com](mailto:info@dehamarine.com)

## Med Certificated Mattresses Yacht Mattress



30 cm thickness



### Yacht Mattress

A MED/IMO certified luxury mattress for yachts, built for premium comfort. It features HR foam and a 65 kg/m<sup>3</sup> visco layer that adapts to body contours for superior rest. The 31% viscose / 4% silk / 65% PES woven cover offers breathability and elegance, while fire-retardant properties ensure safety at sea.

The Yacht Mattress is crafted for premium comfort and performance at sea. Built with high-resilience (HR) foam and pressure-relieving Visco foam, it contours to the body for enhanced support and deep rest. Its 65 kg/m<sup>3</sup> Visco layer adapts to body temperature and shape, promoting optimal spinal alignment. The surface is wrapped in a soft, breathable woven fabric made of 31% viscose, 4% silk, and 65% polyester for a luxurious feel. Fire-retardant and safety-tested, it ensures a safe and refreshing sleep experience on every voyage.

- ❖ MED/IMO CERTIFIED
- ❖ Fire Retardant
- ❖ Full Orthopedic
- ❖ Off-size Manufacturing
- ❖ 30 cm thickness
- ❖ 2 Years Warranty
- ❖ Best Price

Type	HR foam, Visco Foam
Foam	HR foam, Visco Foam
PUR foam density	65 kg/m <sup>3</sup> Visco,
Standard cover	Woven fabric of 31%Viscose, %4 Silk and 65% Pes
Color	White
Fire retardant	Yes
Safety tested	Yes

# DEHAMARINE

DEHA MARINE İÇ ve DIŞ TİC. LTD. ŞTİ.  
Esenyalı Mah. Yanyol Cad. Varyap Plaza No:61 No:102 | Pendik / İstanbul  
Mail: info@dehamarine.com

**DEHA**  *marine*

**Esenyalı mah. Yanyol cad. VARYAP Plaza No:61 Kapı No:102| Pendik / İstanbul**

[info@dehamarine.com](mailto:info@dehamarine.com)  
[sales@dehamarine.com](mailto:sales@dehamarine.com)

[www.dehamarine.com](http://www.dehamarine.com)